



# Fast Planets

IT SOLUTION PROVIDER

COMPANY PROFILE

2538 At Taif – Dhahrat Laban Dist. Unit No.  
8, Riyadh 12553-6187, KSA  
[WWW.FASTPLANETS.COM](http://WWW.FASTPLANETS.COM)

Tel: +966 1 419-7466 ext. 222 - Fax: +966 1 419-7466 ext. 250



**SAAD AL ZAHRANI, CEO**

### Mission Statement from the CEO

Fast Planets Co. Ltd is surrounded by highly motivated , qualified professionals and ambitious individuals with the drive and determination to succeed customers' satisfactions in all aspects.

Our employees , suppliers and vendors are located at the focal point of our operation.

Our main focus is to deliver customer excellence right from the initial contact until to the completion of tasks.

We bring value for society, customers and shareholders, and all stakeholders, through innovative, efficient, neutral and quality management for the provision of shared telecommunications networks and infrastructure through the drive and development of our staff team.



**SYED NAVED HASHMI, DIRECTOR**

### Vision

"TO be Kingdom wide leader in IT & Telecommunication Solutions"

### The Fast Planets Co. Ltd Values

FPCL values are consistently aligned with the Vision and Mission to the extent that they are instrumental for achieving these, and fundamentally reflect an ethical attitude based on principles of tolerance, respect and cooperation with all the stakeholders with which the company wishes to develop and consolidate its project:

**Commitment:** We take charge of the proactive consolidation of our projects.

**Customer focus:** We uncover, understand and consolidate the needs of our customers.

**Innovation:** We bring value to new ideas, approaching them with a creative, professional and critical attitude in order to put them into practice.

**Flexibility:** We adapt to our field, which is in constant evolution.

**Resolution:** We reach our objectives through a combination of enthusiasm, logic and pragmatism.

**Honesty:** We demonstrate integrity in our actions.

**Credibility:** We do what we say.

**Development:** We encourage the continued development of individuals through cohesion, collaboration and teamwork.

# Table of Contents

Company Introduction	5
Telecom Tower Design and Engineering	6
Civil Implementation	8
Site Dismantling & Relocation Services	13
Telecom Services	14
Drive Test Services	17
OSP Services	19
Low Current System Projects	21
IBS (In Building Solutions)	22
Power/Electrical Engineering Services / GIS	25
Quality, Health, Safety and Environment Policy	26
Underground Utility Management	28
Company Certificates / Legal Requirements	30
International Certifications / Audits	32

# Company Introduction

Fast Planets Co. Ltd., is a Riyadh based Design & Engineering Company specializing in Telecom Tower Design & Engineering. It provides consultancy services to both public and private companies in the telecommunication sector throughout the Kingdom of Saudi Arabia.

At Fast Planets, the management staunchly believes in **KAIZAN-Continuous Improvement**; in terms of operational efficiency and expansion, and building a capable and efficient skill set of talented and technically sound individuals who are a true asset to the company.

The Company employs one of the most experienced groups of engineers, technicians, designers and surveyors to do the job with professional excellence. It very well recognizes that technology in engineering can reduce project time, increase detail, and provide a greater assurance of project success, and so it deploys latest and state of the art technology to be precise technically and to enhance effectiveness with one goal in mind, i.e. **Q.O.T- QUALITY ON TIME**.

At Fast Planets, principles like honesty, dedication, long term relationship building & process innovation are ingrained into the culture of the firm. Our faith is that effort is never wasted just like energy is never destroyed and our value is to prove ourselves with our actions.

Since inception, the company is continually adding to its client base, expanded its range of services, experiencing significant growth in revenue and is building a reputation for quality and service; looking to be the market leader in the industry.

We provides wide range and comprehensive engineering and consultancy services to both public and private companies in the fast growing telecommunication and power sector throughout the Kingdom of Saudi Arabia as follows:

**Telecom tower Design and Engineering  
Civil Implementation  
Telecom Sites Dismantling & Re-Location.  
Telecom Equipment Installation & Commissioning.  
Drive Test Services  
OSP / ISP Survey, Design, Installation & Commissioning.  
In Building Solutions (IBS)  
Power/Electrical Engineering Services  
Geographic Information System (GIS) Services**

## Strengths

- Coherent Multifaceted teams
- Multi partner/platform/technology expertise
- Extensive design/deployment experience
- Partnership with leading technology providers

## Telecom Tower Design and Engineering

Fast Planets has been providing Civil Design Services since 2006. We are one of the first companies who pioneered this field.

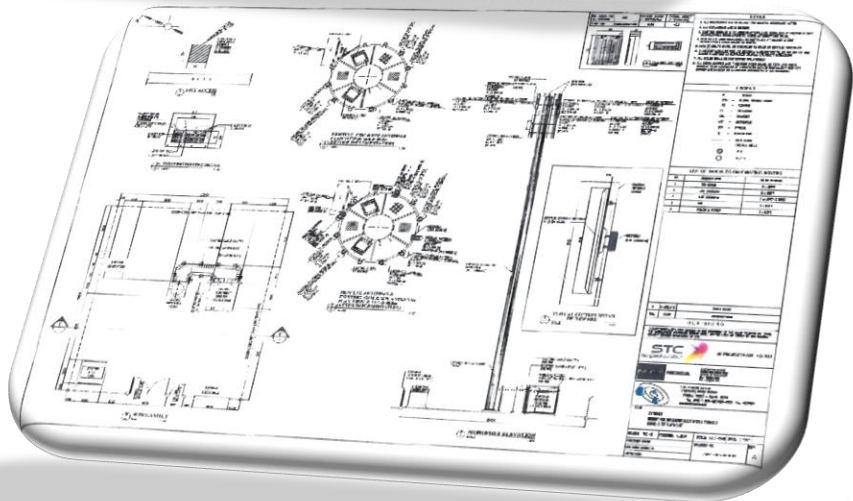
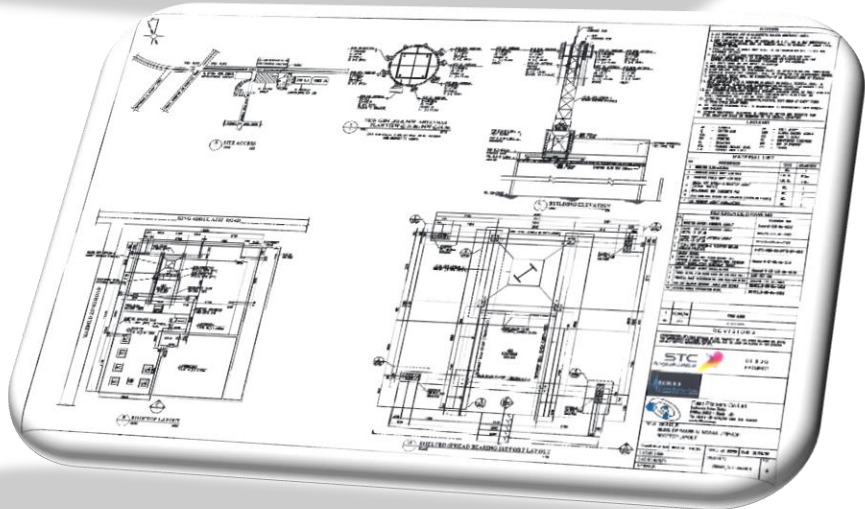
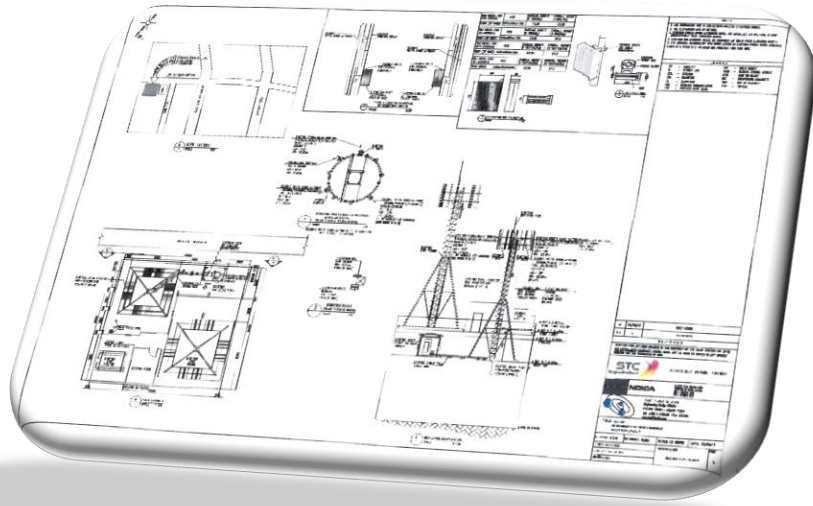
Our capabilities and skill sets cover the Design areas of

New Green Field & Rooftop Sites  
Expansion Sites Green Field & Rooftop  
Existing Tower Evaluation Study.  
New Micro Cell Sites (Easy to Mobilize site Solution)  
Existing Hub / Exchange Sites Expansions.  
IBS Sites (Indoor Building Solution)  
Dismantling Sites  
COW

### Site Acquisition

- Provision of search rings for each site with short listed buildings in order of priority and  
Provision of preliminary Civil suitability document with Engineering drawing
- Engineering Survey Report of all Acquired Sites
- Civil Engineering Design for all Acquired RBS Sites.
- Site Management for all Acquired RBS Sites
- Site Acceptance Inspection - Report
- Approval of Site acceptance Inspection Report
- Site Approval for Handover and Implementation
- RBS Civil Site survey and inspection report
- Structural Analysis of existing structure and preparation of Blue Prints of the site
- Soil testing for ground based sites
- Structural design of foundation for Tower, Shelter and DG and certification for the selected candidate
- CAD drawings for Tower, Shelter, DG & panel room with complete details
- Survey Document for HVAC System in existing Sites
- Calculation, Evaluation of existing HVAC System & recommendations
- Preparation of site BoQ for various categories
- Civil Engineering design based on site investigation report

# Design Sample



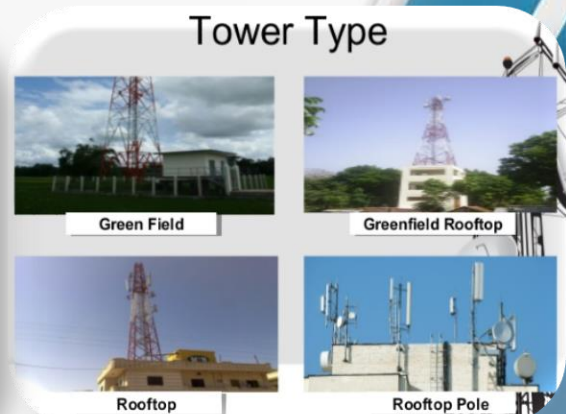
## Civil Implementation

**Fast Planets Civil Department has a total of 8 years' experience in the field of implementation of green filed & rooftop GSM sites. We did many scopes of works such as USF9, 4G3, 4G6, USF12, and now ongoing scope is USF WBB, and our clients are STC, Nokia, Huawei and Ericson. With 8 basic teams and equipment's and 4x4 cars, we keep our capability strong**

- Civil works on Greenfield site including: Reinforced concrete, Plastering and finishing, Steel Structure etc.
- Civil Works on Roof top sites
- Ensure arrival of material as per individual site plan
- Ensure site preparation civil works
- Ensure material delivered as per requirement
- Supervision of site activities.
- Inspection and acceptance of site infrastructure.
- Ensuring readiness for implementation and co-ordination of site activities.

## GSM GREENFIELD & ROOFTOP TOWER CONSTRUCTION AND RELOCATION

- We as Fast planets makes as conceptual planning for GSM Towers with all the required services.
- We, provide complete general contracting and design services covering repair of Roads & utilities
- We, Determine the location and construction specifications during the project planning stage
- We, Locate, size, and design for use by all applicable construction traffic. Consider additional space to turn trucks/trailers.
- We, Address and treat sediment laden runoff prior to discharging from the site
- Whenever possible, construct the entrance on a firm, compacted subgrade. This can substantially increase the effectiveness of the pad and reduce the need for maintenance
- Government permits for crossing streams or wetlands will generally be necessary, and special precautions may be required to protect water quality
- We work for GSM site, striping, asphalt paving, pavement marking, concrete Placement, seal coating/crack filling, hauling, site cleanup.







# Civil Dept. In Action

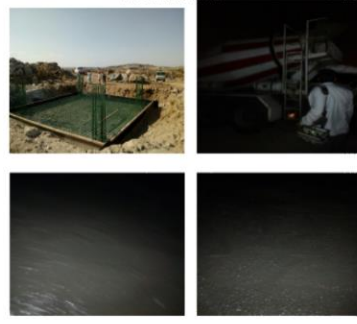


# Civil Team Project Accomplishments

## Excavation



## Foundation



## Pedestals



## Isolation and Backfill



## RFI –Tower, Sunshade, MDB, Fence and Cable Tray



## RFI –Tower, Sunshade, MDB, Fence and Cable Tray



## Tower Painting and Assembly



## Tower Painting and Assembly



# Civil Dept. Milestones



Nokia-STC  
Outstanding Contribution

Nokia-ZAIN  
Outstanding Contribution



## Site Dismantling and Relocation Services

Fast Planets Dismantling Department has a total of 8 years' experience Direct with STC, the services we provide under this department as follow.

- Dismantled & removed equipment's to transfer ware house.
- Dismantle and relocation for electronic boards in box wrapping.
- Removing and transferring old equipment's to STC warehouse.
- Complete relocation and removing GSM sites & transferred to warehouse.
- Initially the work order will be taken from STC.
- Make a detailed survey for the dismantling equipment's for complete site.
- Sending request for MOP & JOB creation to STC.
- Uploading the detailed material list for civil & telecom in NFTS ADMS system.
- Dismantling of the site old equipment works includes with civil & telecom.
- Making tagged for civil materials such as Tower, fence, Shelter & mounts.
- Make wrapping for telecom material such as RBS, Cabinets DSXO racks Rectifier etc.
- Dismantling electronics boards by removing all the color code cables in a proper Manner and tagged.
- Along with ADMS number for every site the material will be delivered to STC WH.
- The approved POD from STC warehouse along with design package for final approval.
- Finally the design package will be submitted to STC for final approval.



## Telecom Services

Fast Planets is one of the first companies to provide Telecom Implementation Services in the Kingdom. From the start of this department, we rehomed thousands of GSM sites for STC Projects.

Telecom services we provides as follow.

Line of Sight Survey, Microwave installation and Commissioning.  
Circuit Work Order (CWO) Implementation  
Telecom Installation (Indoor & Outdoor)  
Rehoming & Rebalancing.  
Manage Router Services (STC Last Mile Microwave Project)

### Line Of Sight (LOS)

- Connectivity of Microwave Antenna between NE & FE, Survey between NE & FE
- Path Profile during survey, LOS report using the s/w Path loss ver. 4.0

### CWO Implementation

- End to End CWO testing
- Testing the media from PE-AGG to target site

### Telecom Installation

#### • Indoor Installation

• Indoor Cable Tray, Grounding Bar, Battery Bank Installation, SMPS Installation, BTS Installation, Connection of Power Cable

#### • Out Door Installation

• GSM Antenna Installation on the Tower, Feeder cable Installation and routing, Earthing of Feeder cable, Connection of Jumper cable to Feeder on GSM antenna end, Connection of Jumper cable to Feeder on BTS end

### Micro Wave installation and commissioning

- Installation of Indoor and outdoor unit for MW
- Alignment of dishes
- Commission the MW as per transmission Design

### Rebalancing and Rehoming Activities

- performing end to end testing of CWO
- Cutover the media during MDT from one BSC to other
- Perform end-to-end testing of EIs as defined in the Rebalancing and Rehoming CWOs

- Verify ADM and/or ISM DDF terminations as assigned in the related CWOs
- Perform E1 hunting and CWO verification as needed prior to any actual field and/or NMS integration of BTS Rebalancing and Rehoming
- Take corrective measures if the CWO is not implemented as designed
- Update the CWO according to the As-Built if discrepancies were found between the design and the actual implementation of the CWO. This is to happen in Consultation with the proper STC departments
- Provide materials and labor for cabling from the BSC to the ADM DDF
- Provide materials and labor for cabling from the ADM DDF to the BTS and interim MW/BTS sites if applicable
- Implementation of the Abis assignment on the BSCs
- Implementation of the Abis E1's cascading or de-cascading as designed in the BSS Engineering plans
- Provide materials and labor for re-cabling and reconnecting the ABIS from one BSC ADM DDF to another
- Provide manpower during the MDT and work closely with the office integration team
- Perform troubleshooting if needed during the night of Rebalance and Rehome activities
- Provide manpower to assist with Network Management integration activities
- Perform basic call and call handover testing immediately after the Rebalancing and Rehoming integration
- Perform additional tasks as requested by STC Integration team

### Manage Router Services

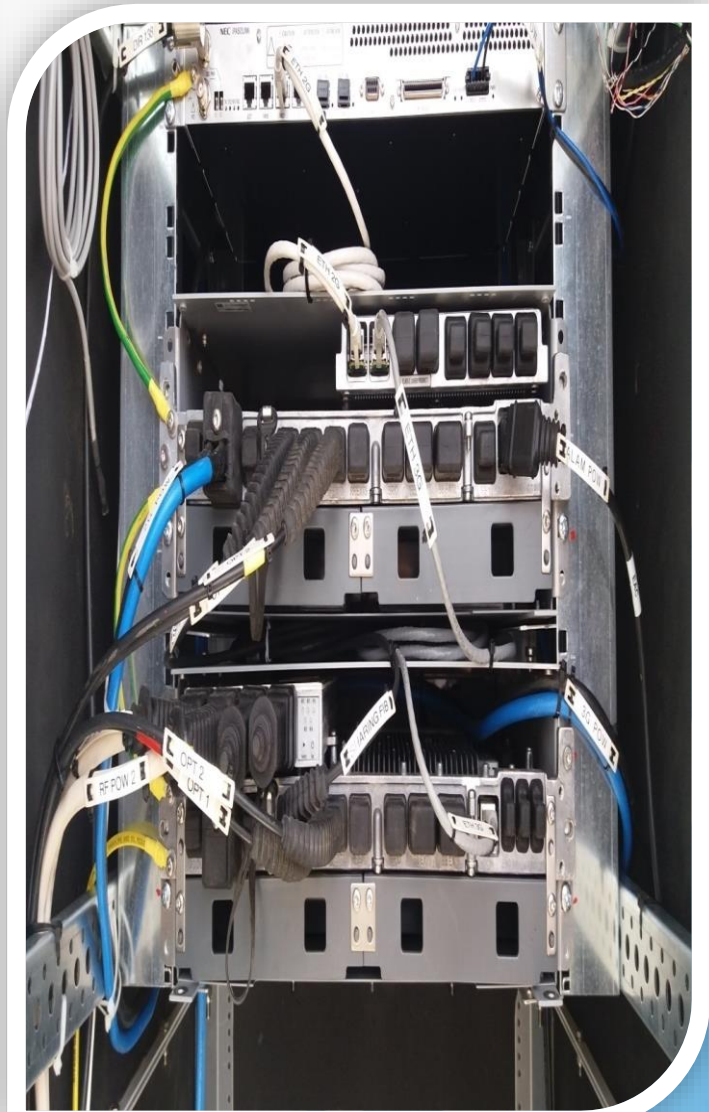
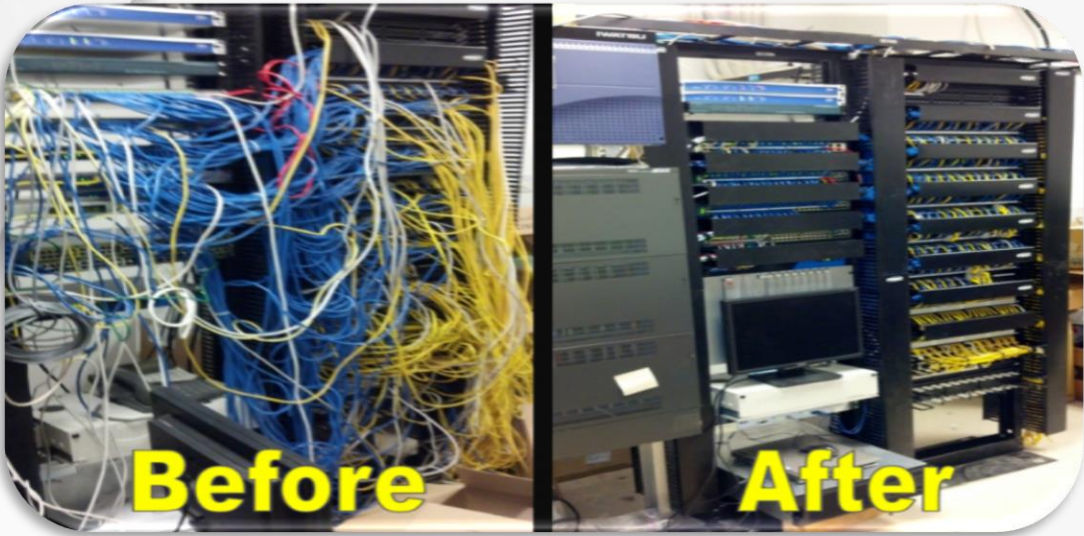
- End to End media testing, Installati Installation of the Router, Configurat design

### Wire line Capabilities

- Detailed remote and host Site Survey
- Planning & setting up of Local Telephone N/Ws using Conventional Copper, Optical Fiber & WLL
- Implementation Planning/Dependencies tracking work sheet
- Site Preparations
- Concrete base and cabinet deployment
- New or Y-Splicing SCECO Power to cabinet
- End to End Verification Testing from Host
- Termination of Y-Spliced cables at MDF frame
- Verification & Performing the Cross-connection jumpers at new MDF
- Final wiring test, subscribers test on MDF
- Performing MDT
- Arrangement of Baladiyah permits and SCECO permits if needed
- Grounding
- 100 % accuracy verification testing of wiring



# Telecom Specialization





## Drive Test Services

Drive Testing is used to analyze and measure the capacity and coverage in a particular area by simulating what levels of service a user would experience in that area. It is also conducted to verify that the site is integrated/ upgraded/ swapped correctly and has no major performance and functional issues. It involves a DT engineer/ technician equipped with drive testing tools in a motor vehicle collecting a wide variety of physical parameter measurements and virtual parameter data and an optional “rigger”. It comprises of the following:

### Drive Testing

Drive Testing is a method of measuring and assessing the coverage, capacity and Quality of Service (QoS) of a mobile radio network. The technique consists of using a motor vehicle containing mobile radio network air interface measurement equipment that can detect and record a wide variety of the physical and virtual parameters of mobile cellular service in a given geographical area by measuring what a wireless network subscriber would experience in any specific area, wireless carriers can make directed changes to their networks that provide better coverage and service to their customers.

Drive testing requires a mobile vehicle outfitted with drive testing measurement equipment. These equipment's are usually highly specialized electronic devices that interface to OEM mobile Handsets. This ensures measurements are realistic and comparable to actual user experiences.

### Drive Test Data Collection

Drive test equipment typically collects data relating to the network itself, services running on the network such as voice or data services, radio frequency scanner information and GPS information to provide location logging.

The dataset collected during drive testing field measurements can include information such as:

- Signal intensity
- Signal quality
- Interference
- Dropped calls
- Blocked calls
- Abnormal events
- Call statistics
- Service level statistics
- QoS information
- Handover information
- Neighboring cell information
- GPS location co-ordinates

### **Equipment Required for Drive Testing**

- Vehicle
- Drive Test Mobile Phones (E.g. Ericsson, TEMS, Huawei)
- Dongle (Network Inspection USB)
- External Vehicle Mounted GPS
- Laptop with Drive test software and data cable for connectivity

### **Industry Standard Post processing Tools**

- TEMS Investigation
- X-CAL
- X-CAP
- TEMS DeskCat
- Actix
- MapInfo

### **Drive Test Performance Measurements Reasons**

- Test the network from subscriber point of view
- Test the complete system end to end
- Benchmark performance against competitor's network
- Test specific important routes and cluster areas

### **Types of Drive Testing**

Drive testing can broadly be categorized into three distinct topics

- Network Benchmarking
- Optimization & Troubleshooting
- Service Quality Monitoring

## OSP Services

Fast Planets Co Ltd. has a highly diversified work profile in OSP. Assisted by its highly qualified, skilled and experienced staff, as well as latest equipment, Fast Planets CO has proved commitment in all works assigned to it, especially with regard to quality, safety and work schedule.

Fast Planets Co Ltd. Provides Specialized services in the following areas:

- OSP site survey and design
- OSP existing route identification by scanner and cable locator.
- OSP civil works.
- OSP FOC installation.
- Splicing and termination.
- OSP maintenance.
- OSP Site Survey and Design:  
All kinds of survey, such as existing route, proposed route, building access, potential route and so on are done.
- OSP Existing Route Identification by Scanner and Cable Locator:  
To avoid any unforeseen accidents, existing cables are located by using latest instruments.
- OSP Civil Works:  
Specialized in all kinds of civil jobs, trench excavation, manhole excavation, trenching for metro, trenching for building access networks.
- OSP FOC Installation:  
Specialized in all kinds of cable installations, micro, duct fiber cables, internal cables and so on.
- Splicing and Termination: Specialized in splicing all types of FOC and termination in any type of ODF.

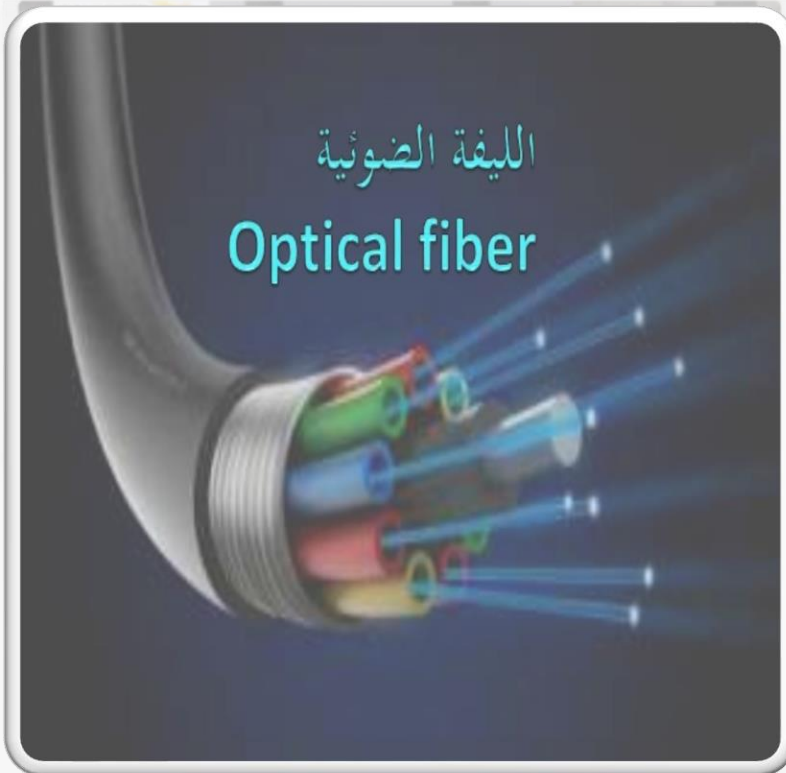
### OSP Maintenance:

Specialized in carrying out all kinds of maintenance such as existing route patrolling and monitoring, intimating clients of any kind of civil jobs around the clients trench, coordinating with other utility owners and contractors to let them know the clients existing routes, strong stand by crews and equipment's to act quick in unforeseen accidents





# OSP PROJECT



# Low Current Systems Projects

*Fast Planets Company makes projection and does turn-key projects with all low-current systems such as*

## **Building CCTV Installation**

Fast Planets Co. Ltd designs Closed Circuit Systems, which have become an integral part of electronic security and automation systems. FPC designs integrated systems for projects taking into account all the requirements envisaged by the customer. Large and small projects are designed by considering the operating scenarios provided by the customer and the risk analysis carried out by the engineers of our company to provide optimum equipment configuration.

CCTV are installed for security purposes and generally used to monitor the movement of people around the areas to be protected. The videos captured by these cameras are stored either digitally or conventionally. The digitally stored videos can be accessed from a remote location.

## **Access Control Systems**

FPC provides Access Control Systems, which constitute an integral part of electronic security systems, with a wide range of products according to the operating scenarios provided by the customer and the risk analysis carried out by our engineers for the fulfillment of multiple purposes. These are put into operation and delivered as a turnkey optimum equipment configuration.

## **BIOMETRIC HAND & FINGERPRINT IDENTITY SYSTEMS**

Biometric systems have been included in Access Control configurations recently.

Biometric devices, used as stand-alone or integrated systems are designed by making use of the measurable unique physical human characteristics for identity verifications. Biometric solutions that utilize measurable unique human body parts are as follows: Finger Print Identification System, Face Recognition System, Iris Identification System, Retina Identification System, Hand Geometry Identification System and Vein (Fist) Identification System.

## **Smart Home Solutions**

FPC has been trained and developed its own mechanism for the home automation that is a highly required in a modern era that allow you to manage your home the way that you want. Home automation includes automation lighting, appliances and home control applications.

Smart Home Solutions include the following;

Lighting Control - Appliances Control - Wireless Remotes - Motion Detection - Door and window sensors  
Leak Detection - Smoke and Co Sensors - Thermostat Control - Access Control - Low Voltage Control

## **Power Supplies and Lighting**

We provide integral solutions in the important fields of engineering systems nowadays - power supply and lighting, and offer a full series of works, which include: projection, supply, installation and commissioning.

Our company provides services and makes works in following activities:

- electrical engineering and electric systems for houses and individual houses;
- a full range of electrical work at enterprises, objects of social and cultural facilities, industrial plants, theaters and cinemas, retail and office facilities;
- internal power supply (wiring, sockets, installation of electricity meters);
- Internal electrical lighting and electrical equipment;
- commissioning of electrical equipment.



**CCTV SOLUTION**



**DATA CENTER**



**CYBER SECURITY**

# I B S (In Building Solution)

Having a good mobile network coverage within a building plays an important role in attracting and retaining mobile subscribers within the building/s. especially in the workplace, Airports, Hotels, Convention centers, Hospitals, Banks etc. If the service provided is more stable, it tends to add more users to the mobile service providers.

To meet this ever-growing demand, building owners are finding it of paramount importance to deploy a strong in-building wireless solution. As a result, addressing the coverage, quality and capacity requirements of In-Building users is mandatory.

A building may not receive adequate mobile coverage from outdoor cell sites. This is because in most cases the signals present outside the building are unable to penetrate the building material, consequently resulting in poor coverage within the building. A typical problem in high rise buildings is the problem of interference, where at higher floors a full network presence is detected but a call cannot be made successfully due to interfering signals. In addition, crowded areas like Malls, Airports, and large Commercial complexes need a dedicated system to handle the capacity requirements for the large number of calls at such locations.

To answer the challenging responsibility, a well-planned in-building coverage system is required. With 3G, it's vital to keep control of interference levels, and buildings with walls, limiting the signal distribution, provide a natural barrier against interference. In-building solutions allow in moving the capacity inside the building without any trouble.

In-Building Solution (IBS) provides indoor coverage using a series of hubs/ Equipment's distributing the signal to number of antennas.

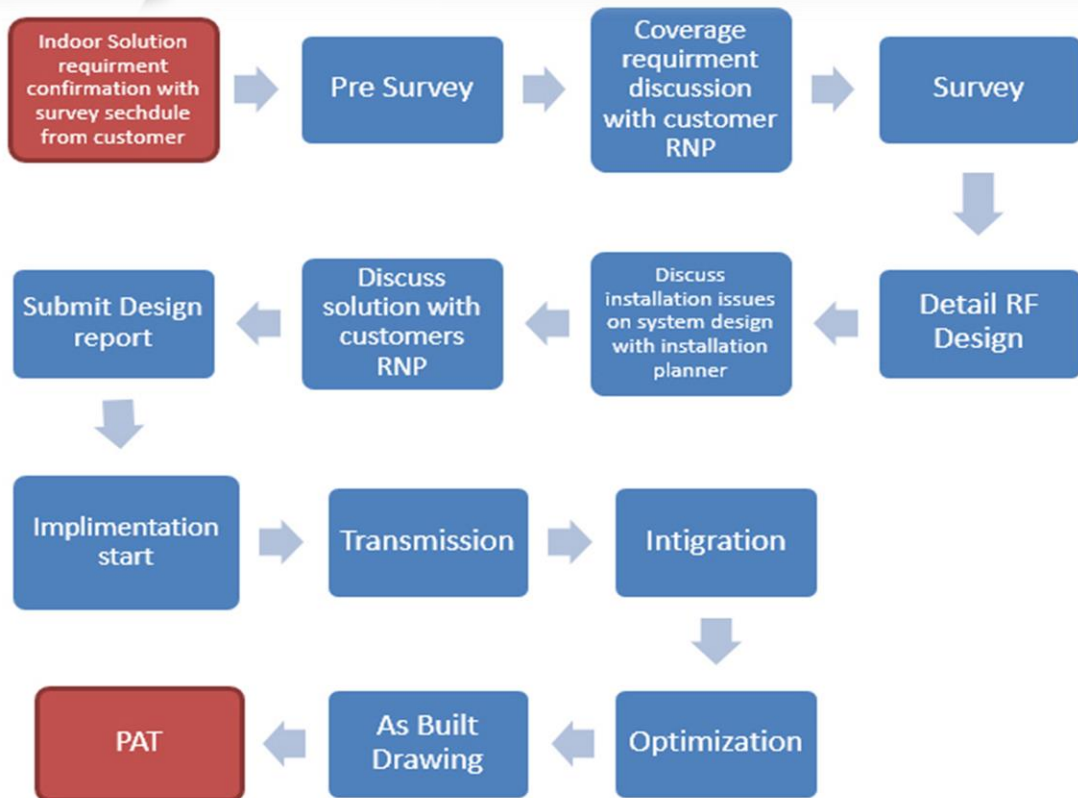
The system is fed by centralized service inputs from a base station (BTS) or repeater. The IBS gives adequate strength and quality of wireless Signal , smooth wireless communication for PDAs, Lap-tops and mobile phones.

## IBS Services

Fast planets provides the following services

- Site Survey
- Design
- Implementation
- Commissioning
- Testing





## Site Survey

- Preparation of site details after visiting to the site
- Including Site Location/Address/Drawings/Permission availability
- Equipment Room
- Space requirement with multi band site equipment's to be installed
- MW Link Location
- Suitable position/s for fixing the Transmission Outdoor units
- Main Power Supply
- Nature of availability (single phase/three phases) & Tapping Locations
- Pre-Walk test
- Representing the current situation & dimensioning of signal strength & capacity
- Deciding on Coverage & Antenna positioning
- Areas of the building to be covered with priority

- Cable Routing
- Methods of Cable laying using Cable Risers/Ducts/Trucking/Ladders...
- Site Photos

Add effecting support for Implementation/Maintenance/Modifications of DAS

#### Detail Design

The RF design shall be based on the site survey results and shall be followed with the main ideas of indoor solution in TSSR. This Covers;

- Coverage planning
- Capacity planning (cell planning)
- Link budget planning
- Antenna planning

The design Report shall include the following information,

- Introduction
- Design Summary
  - Number of Omni Antennas
  - Number of Panel Antennas
  - Number of Sectors
- Building Information
  - Building / block Description and Floor Usage
  - Proposed Equipment Locations with photos
  - Proposed Microwave pole locations with photos
  - Proposed power tapping locations with photos

#### Technical Design

- Sectorization Plan
- Plots of proposed antenna locations and cable routes
- Test transmitter results
- Coverage Prediction plots for each and every location
- Combining arrangement/s
- Trunking Diagram/s
- EIRP Table
- Material List

#### Testing

- Checking installation of DAS with required finishing & Conditions
- Measure VSWR values for each sector
- Perform Optimization Walk test
- Prepare As-built drawings as per requirement
- Hand Over reports including implemented conditions

#### Splitters/Couplers/Hybrid-Couplers/Combiners (Duplexer/Triplexers)/Dummy Loads

- Supply & Installation of Earthing of DAS Passive components at Equipment Room (Hybrid Couplers/Combiners)
- Installation of Antennas
- Labeling



## Power/Electrical Engineering Services

Fast Planets is one of the kingdom's leading power/electrical engineering service provider. Our team of electrical professional have diversified experience. Fast planets provide the Design, engineering, supply, installation, testing, commissioning and maintenance of the followings

- Power transformers of various ratings
- Metering cubicles including replacement & complete overhauling at site
- Power systems, MV/LV substations, GIS switchgear and MCCs (Distribution Cabinets)
- Emergency power back-up solutions including UPS and generators
- Energy meters including cable laying, termination & complete overhauling at site
- Plant equipment, facilities & control, electrical/automation solutions
- Rehabilitation of existing panels & enclosures
- Provision, installation of speed control devices, sub-synchronous converter cascades, etc.
- Underground & overhead distribution network
- Electrification of compounds, shopping malls, industrial and plant facilities
- Telecommunication works, security alarm systems and CCTV
- Testing & calibration of system protection & monitoring devices
- Maintenance and Technical Support

In addition Fast Planets is experienced in providing Saudi electricity company power connectivity services for commercial and non-commercial sector as per customers demand.

## Geographic Information System (GIS) Services

Fast Planets is one of the best company in the kingdom in providing Geographic Information System service. Fast Planets have an excellent team of GIS Specialists, Database Administrator, GIS Technicians and Surveyors with multidisciplinary experience. Fast planets provide the Complete GIS Solution for the organizations both as a service project or consultancy project.

- GIS Services in System Design and Architecture
- GIS Services in Management and Maintenance
- GIS Analysis (specialized for GIS Mapping Agencies) i.e environmental analysis, crime analysis, population density and specific service analysis etc.
- Comprehensive Geodatabase Design and Development as per Organization's Requirements
- Enterprise Geodatabase implementation on (Oracle, SQL Server, PostgreSQL)
- Data Production and Workflow Management
- Map Production & Report Generating
- GIS Applications Development (GIS Mapping and GIS Remote Sensing)
- GIS Mapping User Training and Support
- Conventional & Differential GPS surveying (RTK)
- GIS Base Map Development & Planning
- Large Volume Data Conversion Services (From CAD, Microstation, Hard Copy Maps etc)
- Digitization and Data Entry Services
- 3D Modeling and Visualization for GIS Mapping Products in ArcGIS & Super Map
- Remote Sensing Products
- Architectural CAD Drafting

## QHS COMPLIANCE

- Fast Planets Co, Ltd is involved in turnkey projects related to telecom, we committed to delivering the highest standards of quality, safety and responsiveness in the telecommunication engineering and services we provide for our customers. Telecom's quality policy aims to improve the Quality Management System continuously. It is planned to fulfill customer demands and needs very well. In parallel, it is designed to do all the works
- Fast Planets have Quality and Safety department, managing by qualified & certified QHS manager and his team.
- Fast Planet comply ISO 9001:2008 and OHSAS 18001:2007 international standards.

### **We are committed to:**

Provide our customers with high quality products and services in a timely manner conforming to the agreed specifications and/or purchase order requirements. Liaise closely with our manufacturing partners to achieve the desired conformity requirements. Provide continual training to our employees so that they remain motivated and abreast with the developments in technology.

- Provide and maintain safe test & measuring equipment and tools. Ensure that the Employees and subcontractors using such tools are competent and given adequate training
- Prevent pollution to the environment wherever possible and practical with the use of non - polluting techniques and practices. Involve the employees on environmental issues and ensure they understand their roles and responsibilities.
- 
- Comply with all Applicable statutory, regulatory and other requirements while fulfilling the above commitments.
- Communicate the QHSE Policy to the employees, customers, manufacturing partners, subcontractors and stakeholders.
- Improve continually the performance of management system which is based on **ISO 9001:2008** and **OHSAS 18001:2007** international standards.
- Review the QHSE Policy at regular intervals to ensure it remains aligned with the organization scope.

### **SAFETY POLICY AND VISION**

As a condition of employment, each employee is expected to obey safety rules and to exercise caution in work activities and to conduct themselves in a manner that does not endanger themselves, their fellow employees and customers.

**FP** is committed to the safety and health of its employees, customer and visitors and recognizes the need to comply with applicable regulations governing injury and accident prevention. Maintaining a safe work environment requires the continuous cooperation of employees.

**FP** will maintain safety and health practices consistent with the standards of our industry, Information regarding workplace safety and health issues is disseminated through regular internal communication channels such as Company meetings, and bulletin board postings, memos or other written communications.

**Fast Planets Company** which highly considers the health and safety of all its workers as an integrated part of efficiency, all necessary studies and precautions have been performed properly, based regulations and standards related to the subject.

## In This Scope

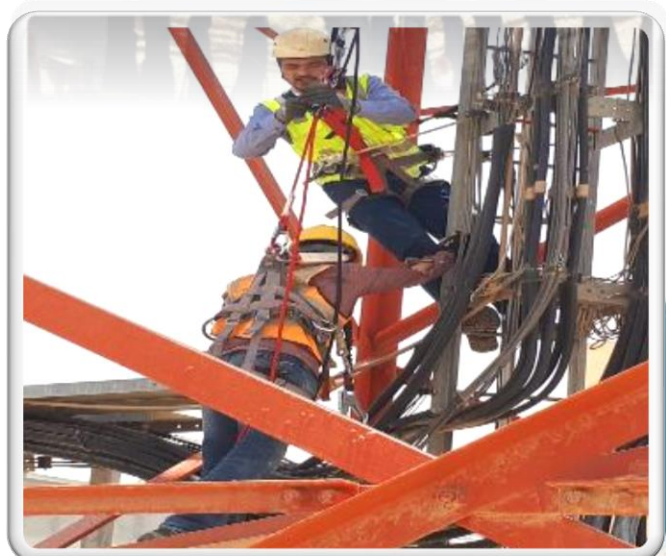
A labor-worker's health and job safety-security working group has been established, and periodical meetings have been made with participation of riggers and all related employees for continuous developments to ensure that safety is properly implemented.

Our entire workers and our partners are subjected to periodical trainings by our job safety specialists and efficiency of training given has been measured in place by our specialist engineers.

Personal protective equipment has been supplied in accordance with the standards and delivered to all related personnel. Our workers and solution-partners have been raised awareness for using mentioned equipment's via trainings.

By considering risks which may emerge, Worker health and Job safety instructions according to subjects have been established and these documents have been distributed to entire employers.

By evaluating entire risks in the subjects of occupational diseases and job safety, danger is eliminated in its source with the participation of our employers and zero-job accident and occupational disease are targeted.



# Underground Utility Management

## Underground detection - Our complete solutions for all your needs

- At Fast Planets we are a one-stop solution for providing subsurface locates in the KSA and GCC zone. When onsite, our techs are equally capable of locating near surface conduits prior to saw cutting as they are capable of locating deeper utilities. Our Ground Penetrating Radar (GPR) Techs specialise in concrete, utility, transportation, and geophysical investigations.
- Ground-penetrating radar (GPR) is a non-destructive-testing method that generates an electromagnetic signal, which penetrates the subsurface and measures the amplitude and the travel time of the returned signal. GPR data provides high-resolution cross-sectional images of the scanned material. Antennae of different frequencies allow for varying levels of resolution and depths of investigation. The data is very versatile and applicable across many disciplines.



### Industries

### Hospitals

GPR has been essential in the healthcare construction industry. Avoiding the use of x-ray in hospitals has allowed for the safe. Core drilling and slab sawing operations are being performed without the inconvenience of cut conduits or tension cables.

### Government & Military

With the reputation of being a leader in Ground Penetrating Radar, our services have been required at government facilities across the KSA. We have performed GPR services ranging from utility and conduit locates to Underground.

### Industrial & Manufacturing

Fast Planets performs utility locates inside industrial and manufacturing plants during remodels and plant expansion projects. Other services include determining concrete and sub base thickness analysis to assist in the installation of newer, heavier equipment.

### Power & Energy

- Fast Planets leads the industry in ground penetrating radar expertise and experience. Offering a wide range of services we have performed.
- Rebar and Conduit Locates
- Utility Locates
- Water Leaks
- Void Analysis
- Concrete/Depth-of-Cover Thickness
- Underground Storage Tank Locates
- Void Locates

## Transportation, Education & Agriculture

Our entry into our newest market has allowed us to expand our operations to include Electromagnetics. Electromagnetics can assist in measuring and mapping soil salinity to effectively focus efforts in managing salinity issues.

Locating interior utilities is a crucial step in ensuring that small timeframe summer remodels are completed on time. Performing locates at most of the local school districts has assisted contractors in preventing unnecessary damage to existing utilities underground.

### Some of our projects:

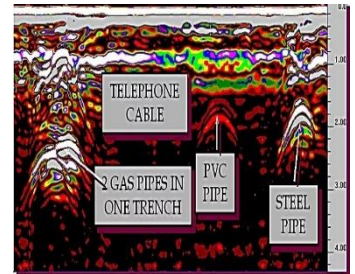


# Underground Utility Services

## GPR Services

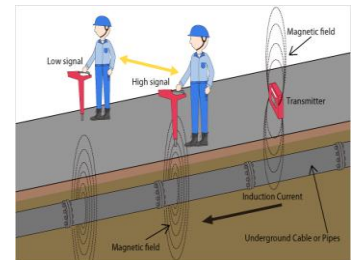
Ground Penetrating Radar (GPR) is a valuable and necessary tool in the construction industry. Prior to GPR, X-Ray was the only means of “looking” through concrete to identify structures such as rebar, conduit and stressed/tension cables. Concrete X-Ray poses a serious health risk and is not as fast, accurate or as efficient as GPR.

Today Fast Planets leads the GPR industry, offering expertise services around the KSA. Often recommended by our equipment manufacturer our skilled technicians and conservative approach to radar separates us from other Ground Penetrating Radar companies.



## Electromagnetic Location for Utility Detection

EML works by detecting the electromagnetic signal that may be emitted by power cables, or the energy from low frequency communications signals which has ‘coupled’ onto metal services. Alternatively, in the case of a metal service which is not a power cable, it can be induced to emit a signal by accessing the service and clamping a separate transmitter onto it.



## Utility Relocation

Utility Coordination involves identification and possible relocation of existing facilities that may be in conflict with proposed highway/bridge projects. Successful utility coordination requires early and frequent communication with utility owners, as well as cooperation and clear identification of the project scope and schedule. The Utility Relocation activities are coordinated by the District and Central Office Utility Relocation Units.

The District Utility Relocation Units are responsible for the clearance of utility facilities on all construction projects in the District and the implementation of the Department's policies and procedures. Utility facilities include all gas, water, sanitary sewers, electric, cable TV, communications, petroleum products pipelines and other facilities that provide a direct or indirect utility service to the public. We are also specialised in Underground Cable Tracing.

## As build utilities mapping

### FULFIL YOUR AS-BUILT DRAFTING NEEDS

Our teams are assembled based on professional education and expertise to ensure that your project is finished correctly the first time. The as-built drawings and drafting services we provide will deliver what your specific requirements are – we know your project is unique and our team gives your project the focus needed to finish correctly and accurately. We take pride in mixing a blend of capable, innovative, and smart human capital with the latest in innovative technology to serve our clients project development goals.

As-built drawings are the required foundation of any architectural design project. Whether the project is residential, commercial, hospitality, high-rise, educational, or any other building type; up-to-date as-built drawings are obtained or created to show the architect and design team exact dimensions and conditions of the existing property. The CAD and REVIT files Fast Planets creates, will serve as the start files for the design team. While some architects provide their own as-built surveys in-house, many find it beneficial to outsource to a specialist like Precision to keep their design team in the office doing the design work, while we take care of their field work. Our reliability, attention to detail, and fast turn-around time benefits architects, large corporations, and governmental agencies working the architecture/engineering/construction industry, as well as small businesses and homeowners. Also we are specialise in Underground Cable Tracing.



## Quality Policy

Fast Planets Company Ltd (FPCL) is committed to Customer Satisfaction through quality products and services and by complying with our advanced technology and management practices.

Our Quality Policy is defined and strongly driven by the following management principles and behaviors.

Fast Planets Company Ltd (FPCL)'s management sets frame work to achieve the policy by implementing and integrating the Quality Management System by:

- Fast Planets Company Ltd (FPCL)'s business processes are aligned with best international practices in the management system; we use ISO 9001 Quality management system as a tool to drive the system effectiveness and performance.
- Upgrading organization knowledge by keeping an eye on upcoming latest engineering and technologies.
- Zero tolerance to business ethics to see Fast Planets Company Ltd (FPCL) team not compromise on Quality elements, which is ensured through rigorous training and motivations.
- Our team's competency is the strength of success, the knowledge enhancement and transfers are ensured through continuous training and competency enhancement programs.
- Continual improvement of our business is emphasized by regular review of business risks and opportunities, as well as management and review of organization objectives through the effective implementation and improvement of the quality management system.
- Effective communication, Implementation and application of this policy is ensured through Fast Planets Company Ltd (FPCL)'s management review process and regular reviews.

Fast Planets Company Ltd (FPCL) strives to be the best provider in telecom services in Kingdom of Saudi Arabia.

Through the use of these guiding principles, everyone in Fast Planets Company Ltd (FPCL) is accountable for fully satisfying our customers by meeting or exceeding their needs and expectations.



## Industry Experience

We have nurtured strong relationship with Ericsson, Motorola, Alcatel, Lucent, Nokia, ZTE and Nortel and various other key players in the Telecom Industry service providers. These alliances arm us with the current technology trends and the required technical expertise, making us fore runners in providing better end-to-end solutions.

















Trusted Partners

  
 وزارة التجارة والاستثمار  
 Ministry of Commerce and Investment

رؤية 2030  
 المملكة العربية السعودية  
 KINGDOM OF SAUDI ARABIA

٧٠٠١٥٢٧١٩٦  
 الرقم: ١٠١٠٢٣٤٠١٧  
 التاريخ: ١٤٢٨/٠٥/٢٠ هـ

شهادة تسجيل شركة

الاسم التجاري للشركة: شركة الكواكب السريعة (شركة شخص واحد)  
 نوعها: ذات مسؤولية محدودة  
 جنسيتها: سعودي  
 صفة الشركة: ٩٩ سنة  
 تاريخ إنشائها: ١٤٢٨/٠٥/٢٠ هـ وتنتهي في: ١٤٤٨/٠٥/١٩ هـ  
 مركزها الرئيسي: الرياض حي المحمدي طريق الملك عبدالعزيز  
 ص ب: ٥٦٢٣٣ الرمز البريدي: ١١٥٦٤ هاتف: ٤٨٣٠٠٢٣ فاكس: ٤٨٣٠٠٢٣

النشاط: تمديد الاتييب باختلاف انواعها للكهرباء والاتصالات وغيرها، إنشاء وإقامة واصلاح محطات وابرار الاتصالات السلكية واللاسلكية والرادار ، تمديد اسلاك الاتصالات، تمديدات الشبكات، تركيب وتمديد شبكات الكمبيوتر والاتصالات

رأس المال: ٥٠٠٠٠٠ ريال سعودي  
 المديرين: ١- سعد ناهج سعد الزهراني  
 ٢-  
 ٣-  
 ٤-  
 ٥-  
 ٦-  
 ٧-  
 ٨-  
 ٩-  
 ١٠-  
 ١١-

سلطات المديرين للمديرين: حسب ما نص عليه عقد الشركة.  
 يشهد مكتب السجل التجاري بتحديث: الرياض  
 وتنتهي صلاحية الشهادة في: ١٤٤٨/٠٥/٢٠ هـ بموجب رقم: ٣٩٦٨٩١٩١  
 التاريخ: ١٤٤٠/٠٨/٢٤ هـ  
 مدير السجل التجاري: محمد النجدي  
 التوقيع: محمد النجدي

  
 وزارة التجارة والاستثمار

  
 الهيئة العامة للزكاة والدخل  
 GENERAL AUTHORITY OF ZAKAT & TAX (GAT)

رقم الشهادة: ١٠٢٠٣٨٤٠٤  
 التاريخ: ١٤٤١/٠٧/٢١ هـ  
 الرقم المسر: ٣٠٠٤٤٤٨٤

شهادة  
CERTIFICATE

شهادة تسجيل في ضريبة القيمة المضافة  
VAT registration certificate

تشهد الهيئة العامة للزكاة والدخل بأن المكلف / شركة الكواكب السريعة  
 شركة رقم ٧٠٠١٥٢٧١٩٦ وسجل تجاري رقم ١٠١٠٢٣٤٠١٧ رخصة رقم ٣١٩٩٢  
 قدم إقراره عن الفترة المنتهية في ٢٠١٨/١٢/٣١ م  
 وقد منح هذه الشهادة لتمكينه من إنهاء جميع معاملاته بما في ذلك صرف مستحقاته النهائية عن التوفد.  
 يسري مفعول هذه الشهادة حتى تاريخ ١٤٤١/٠٧/٢١ هـ الموافق ٢٠٢٠/٠٤/٢٠ م.  
 (السابع من رمضان ألف وأربعمائة واحد وأربعون هجري)

عنوان المركز الرئيسي:  
 المدينة: الرياض الحي: الورود  
 صندوق البريد: ١١٥٦٤  
 الهاتف: ٠٠١١٥-١٧٧١٩٦

الهيئة العامة للزكاة والدخل  


هذه الوثيقة مرسلة من النظام الآلي ولا تحتاج إلى توقيع  
 www.gazt.gov.sa

  
 الهيئة العامة للزكاة والدخل  
 GENERAL AUTHORITY OF ZAKAT & TAX (GAT)

رقم الشهادة: ١٠٢٠٣٨٤٠٤  
 التاريخ: ١٤٤١/٠٧/٢١ هـ  
 الرقم المسر: ٣٠٠٤٤٤٨٤

شهادة  
CERTIFICATE

شهادة  
CERTIFICATE

تشهد الهيئة العامة للزكاة والدخل بأن المكلف / شركة الكواكب السريعة  
 شركة رقم ٧٠٠١٥٢٧١٩٦ وسجل تجاري رقم ١٠١٠٢٣٤٠١٧ رخصة رقم ٣١٩٩٢  
 قدم إقراره عن الفترة المنتهية في ٢٠١٨/١٢/٣١ م  
 وقد منح هذه الشهادة لتمكينه من إنهاء جميع معاملاته بما في ذلك صرف مستحقاته النهائية عن التوفد.  
 يسري مفعول هذه الشهادة حتى تاريخ ١٤٤١/٠٧/٢١ هـ الموافق ٢٠٢٠/٠٤/٢٠ م.  
 (السابع من رمضان ألف وأربعمائة واحد وأربعون هجري)

عنوان المركز الرئيسي:  
 المدينة: الرياض الحي: الورود  
 صندوق البريد: ١١٥٦٤  
 الهاتف: ٠٠١١٥-١٧٧١٩٦

الهيئة العامة للزكاة والدخل  


هذه الوثيقة مرسلة من النظام الآلي ولا تحتاج إلى توقيع  
 www.gazt.gov.sa

LEGAL REQUIREMENTS

**شهادة اشتراك**  
Membership Certificate

Riyadh Chamber

---

<b>رقم العضوية الموحد :</b>	183005	183005	<b>رقم العضوية الموحد :</b>
<b>تاريخ الإصدار:</b>	06/06/2007	2007/06/06	<b>تاريخ الإصدار:</b>
<b>درجة العضوية :</b>	Second	الثانية	<b>درجة العضوية :</b>
<b>شهادة الغرفة التجارية الصناعية بالرياض بأن</b>	Riyadh Chamber Certifies		<b>شهادة الغرفة التجارية الصناعية بالرياض بأن</b>
<b>شركة الكواكب السريعة</b>	KAWAKB.CO		<b>شركة الكواكب السريعة</b>
<b>مقيدة بالسجل التجاري / الترخيص رقم :</b>	1010234017	1010234017	<b>مقيدة بالسجل التجاري / الترخيص رقم :</b>
<b>ينتهي سريان هذه الشهادة في</b>	04/12/2023	2023/12/04	<b>ينتهي سريان هذه الشهادة في</b>

الخدمات الإلكترونية  
E-Services Riyadh Chamber  
920004565

- يلزم التحقق من الوثيقة عبر الرابط <https://mybusiness.chamber.sa> أو تطبيق (سند) للأجهزة المحمولة أو الرقم الموحد دون ادعى مسؤولية على الغرفة عن محتوى الوثيقة.
- تعد هذه الوثيقة من الوثائق الإلكترونية لغرفة الرياض، ويمنع تعديها أول محاولة العبث بها وأصبح لأي محاولة لتعديلها وتعرض صاحبها للملاحقة القانونية.

LEGAL REQUIREMENTS

**تسجيل العنوان الوطني**  
National Address Registration

**معلومات الحساب**  
Application No: 184222554  
Service No: 184222554  
Customer Account: 098259282

**معلومات العنوان**  
عنوان السكن: الرياض، المنطقة الشرقية، حي النور، شارع الملك سعود، رقم 2508

**معلومات العنوان**  
Building No: 2508  
Street Name: الملك سعود  
District Name: حي النور  
City Name: الرياض  
Zip Code: 12513  
Address No: 8387  
Unit No: 8

**معلومات الحساب**  
رقم العميل: 867  
رقم الهاتف: 997  
رقم العميل: 184222554  
رقم العميل: 184222554

**معلومات العنوان**  
عنوان السكن: الرياض، المنطقة الشرقية، حي النور، شارع الملك سعود، رقم 2508

**معلومات العنوان**  
Building No: 2508  
Street Name: الملك سعود  
District Name: حي النور  
City Name: الرياض  
Zip Code: 12513  
Address No: 8387  
Unit No: 8

**شهادة**

أشهد أنني قد سجلت عنواني الوطني رقم 2508 شارع الملك سعود حي النور الرياض 12513 رقم الوحدة 8387

رقم العميل: 867  
رقم الهاتف: 997  
رقم العميل: 184222554  
رقم العميل: 184222554

www.gov.sa/nac

**شهادة**

**شهادة سعودي**

أشهد أنني قد سجلت عنواني الوطني رقم 2508 شارع الملك سعود حي النور الرياض 12513 رقم الوحدة 8387

رقم العميل: 867  
رقم الهاتف: 997  
رقم العميل: 184222554  
رقم العميل: 184222554

www.gov.sa/nac

**شهادة سعودي**



International Certifications



**BUREAU  
VERITAS**

شركة مكتب فيريetas

**Successful Completion  
Of  
Outside Plant  
OSP Audit**

This is to confirm that

**Fast Planets LTD CO, RIYADH**  
STC Vendor No. 9882

Has been audited based on STC Qualifying Criteria

Date of Audit: 13 / 12 / 2018

Signed:



**Bashar Ahmed Salem Saleh**  
Riyadh Office Manager

Central Region, Riyadh, KSA

Issued in Riyadh, KSA on 24/12/2018  
Expire after one year



Ref. No.: SA.1703661/RDH/C01

Project No. 0458454

Issued by: Bureau Veritas (Industry Dept.) Saudi Arabia

P.O. Box No. 88245, Riyadh 11425 - Kingdom of Saudi Arabia - Tel: (11) 8252000 - Fax: (11) 2016009 C.R. 1010154010 - C.C. No. 9035A - Capital Paid SAR 2,000,000,000  
 الرياض 11425 - المملكة العربية السعودية - الفون رقم: (11) 8252000 - فاكس: (11) 2016009 - رقم التسجيل: 1010154010 - رقم رأس المال: 2,000,000,000 ريال سعودي  
 E-mail: [fr.saudi@bv.com](mailto:fr.saudi@bv.com) [www.bureauveritas.com](http://www.bureauveritas.com) Website: [www.bureauveritas.com](http://www.bureauveritas.com) موقع الإنترنت